

The museum houses over 14,000 significant works of art—including ceramics, architecture, sculpture, painting, sculpture, metalwork, lacquer, and other genres. These include works owned by the Kyoto National Museum as well as treasures entrusted on long-term loan from temples, shrines, and private collections. Artworks are shown in short, frequently changing thematic exhibitions in the museum's new Heisei Chishinkan Wing. Twice a year, the museum organizes large-scale special exhibitions, also held in the new wing. The original red brick Meiji Kotokan building is currently closed in preparation for seismic retrofitting. During installation periods before and after special exhibitions, the Heisei Chishinkan Wing is closed to the public. The museum gardens and outdoor exhibits remain open during these times.



VISITOR INFORMATION

MUSEUM HOURS (Admissions ends 30 min. before closing)
 9:30 a.m. - 5:00 p.m.*
 Collection Exhibitions
 Special Exhibitions Times vary. Visit www.kyohaku.go.jp for details.
 Museum Gardens Only
 9:30 a.m. - 5:00 p.m.
 *The museum is open late on Friday and Saturday nights.
 Visit www.kyohaku.go.jp for details.

CLOSED

Mondays* and around the New Year
 *When Monday is a national holiday, the museum stays open on Monday and closes the following Tuesday.

ADMISSION

Collection Exhibitions*
 Adult ¥520 (¥410) University Student ¥260 (¥210)**
 Youth/University Student/Senior/Visitor with Disability (+1 Attendant) Free**
 *Hours of admission for Visitor with Disability (+1 Attendant) Free**
 **With appropriate identification.

Museum Garden Only

Adult ¥260 (¥210)
 Youth/University Student/Senior/Visitor with Disability (+1 Attendant) Free

GETTING HERE

By JR Train

Get off at Kyoto Station. From bus boarding area, take the Keihan Railway City Bus #100 or from bus platform D2 in front of the station, take City Bus #206 or #208. Get off at "Hakubutsukan Sanjusangendo-mae" bus stop, in front of the museum.
 Exit, take the Process Line bus bound for "Kyoto Joshi Daigaku-mae." Get off at the "Higashiyama Shichijo" bus stop and walk one minute to the museum.

By Keihan Railway

Get off at Shichijo Station. Walk east along Shijo Street for about seven minutes to the museum.

By Kintetsu Railway

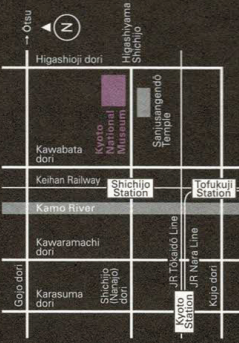
Get off at Tenbashi Station and walk east along Tenbashi Street to the Keihan Tenbashi Station. Take a Demachiyangi-bound train to Shichijo Station. Walk east along Shichijo (Nanajo) Street for about seven minutes to the museum.

By Hankyu Railway

Get off at Kawaramachi Station. Walk east over the bridge to the Keihan Railway Gion Shijo Station. Take an Osaka-bound Keihan train to Shichijo Station. Walk east along Shichijo Street for about seven minutes to the museum.

Parking

The museum has limited parking at an hourly rate. Please use public transportation whenever possible.



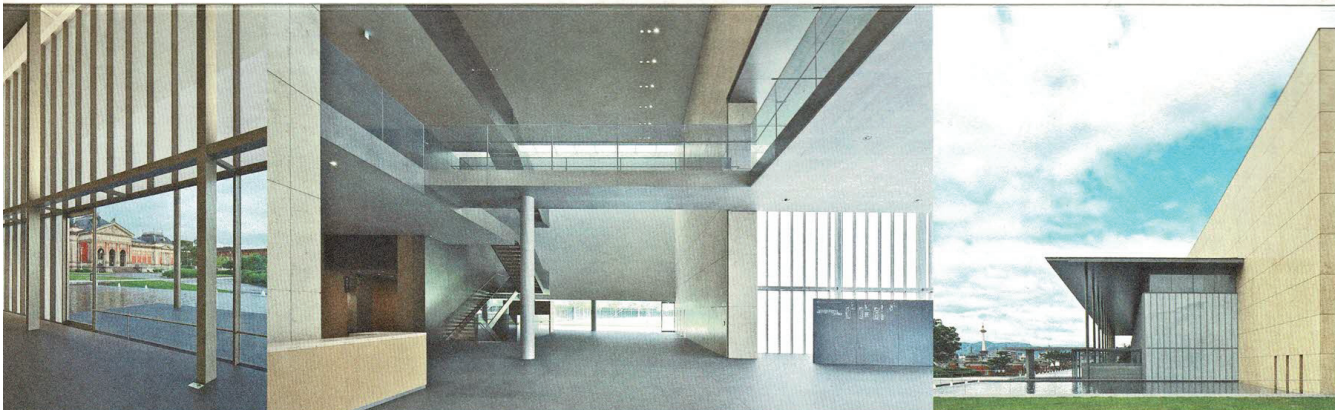
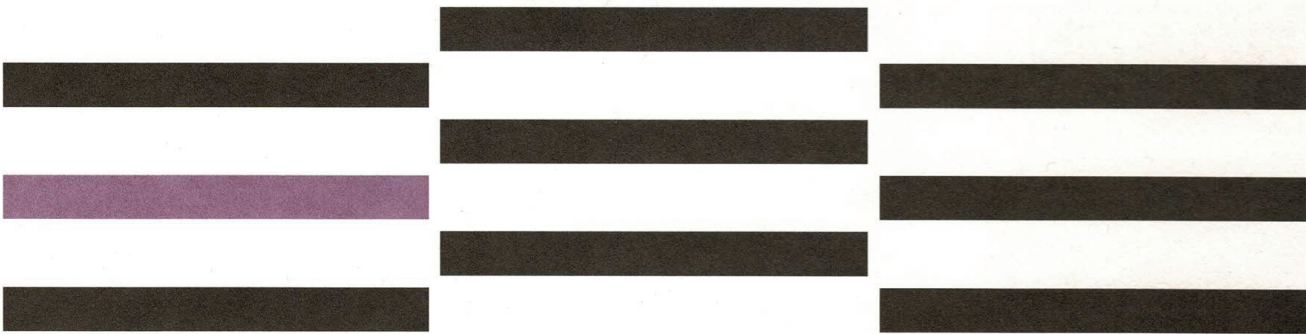
Kyoto National Museum

527 Chaya-cho, Higashiyama-ku
 Kyoto 605-0931, Japan
 Tel. (+81)075-525-2473
www.kyohaku.go.jp (Japanese)
www.kyohaku.go.jp/eng (English)

March 2018

KYOTO NATIONAL MUSEUM

Guide to the Heisei Chishinkan Wing

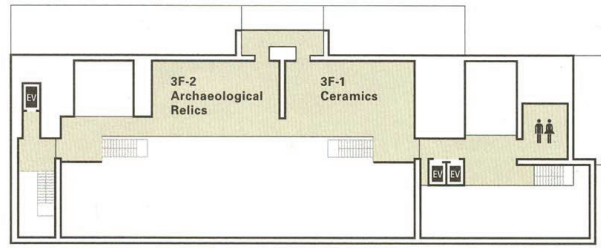


In the early Meiji period (1868–1912), a movement to Westernize and modernize Japanese society put the country's traditional culture, antiquities, and sacred temples and shrine treasures at risk of damage or destruction. In order to protect Japan's endangered cultural properties, in 1889 the government committed to build three national museums in Tokyo, Kyoto, and Nara. The Kyoto National Museum

Heisei Chishinkan Wing of the Kyoto National Museum. Architect: Taniguchi Yoshio.



3F



3F-2 Archaeological Relics

Archeological artifacts from the Jōmon, Yayoi, and Kofun periods; artifacts excavated from temples and sutra mounds dating from the Nara through Heian periods.



Ceramics

Japanese stoneware and porcelains from the Nara through Edo periods; Chinese ceramics from the Han through Qing dynasties; Korean ceramics of various periods.

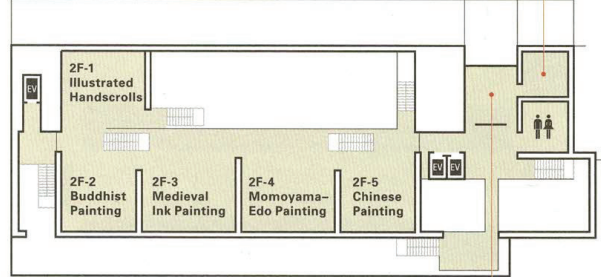
2F -1-5 Painting

Japanese religious and secular paintings of various genres, formats, and historical periods; Chinese paintings imported into Japan at different times in history.



2F-1 Illustrated Handscrolls

2F



2F-2 Buddhist Painting



Reference Corner

An educational resource center featuring database access, a small reference library, a Kyoto cultural properties map, digital handscroll programs, and other interactive ways to learn more about the Kyoto National Museum collections.

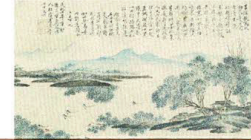


2F-3 Medieval Ink Painting



2F-4 Momoyama-Edo Painting

2F-5 Chinese Painting

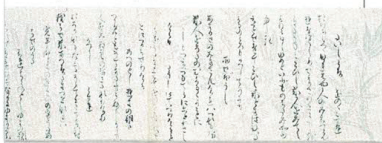


1F

1F-2 Feature Exhibitions

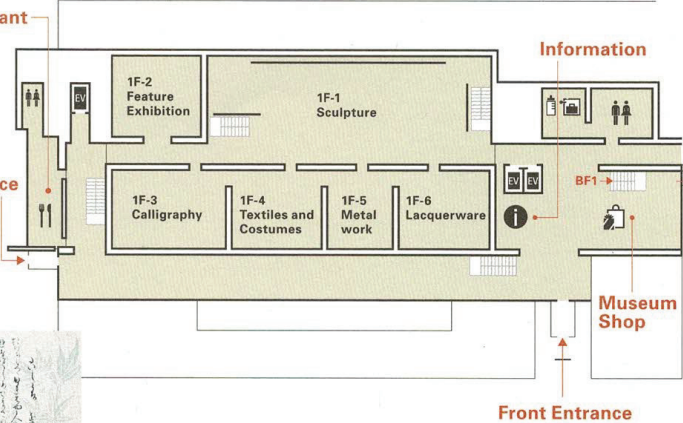
1F-3 Calligraphy

Japanese and Chinese calligraphy with a focus on connoisseurship; sutra manuscripts and other religious scriptures; historical records and other archival manuscripts.



1F-4 Textiles and Costumes

Japanese textiles dating from antiquity through the Edo period, with a focus on such aspects as the development of weaving and dyeing techniques and the meaning of motifs.



1F-5 Metalwork

Buddhist metalwork used for rituals, sacred adornment, and offerings; bronze mirrors from temples and shrines; gilt bronze and cloisonné fittings; tea kettles; and armaments such as swords and armor.



1F-6 Lacquerware

Japanese lacquer objects, with a focus on the technique of makie (sprinkled metallic pictorial decoration); Chinese, Korean, and Ryūkyū lacquer.

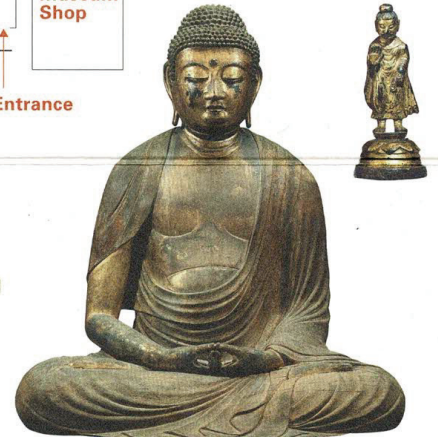


BF1 Lecture Theater

An auditorium used as a theater for 4K and VR films introducing museum collections and as a venue for Saturday lectures (in Japanese) by museum curators and other specialists, explaining works on view in the galleries.

1F-1 Sculpture

Japanese Buddhist and Shinto sculpture of the Heian and Kamakura periods; sculpture from Gandhara, South Asia, China, and Korea in such materials as stone and bronze.



From left: *Haniwa of a Male Farmer Decorated Jar*, Sue ware *Nail Covers*, attributed to Nonomura Ninsue (n.d.), Kyoto ware, ICP *Woman Holding a Peckinese Bowl with Cherry Blossoms and Autumn Leaves*, by Nin'ami Dohachi (1783-1855), Kyoto ware *Tales of Hungry Ghosts*, NT *Amida beyond the Mountains*, NT *Birds and Flowers of the Four Seasons*, by Sesshū Tōyō (1420-1506?), ICP *Anthology with Cranes*, by Tawarayama Sōtatsu (n.d.) and Hon'ami Kōetsu (1558-1637), ICP *Nine-Section Silk Brocade*, by Shen Zhou (1427-1509), IAO *Kokin wakashū*, segment of Volume 12 (*Hon'ami gire*), NT *Doobuku Coat with Paulownia and Arrows*, ICP *Stationery Set with Black Pines and Deer in Makie and Mother-of-Pearl Inlay*, by Nagata Yūji (n.d.) *Armor (Yoroi) with Purple Lacing Seated Amida Nyorai Standing Buddha* (All works from the collection of the Kyoto National Museum)
NT=National Treasure, ICP=Important Cultural Property, IAO=Important Art Object

There is no permanent collection installation at the Kyoto National Museum. For preservation purposes, the artworks on view in the Heisei Chishinkan are reinstalled many times each year in thematic exhibitions. We apologize if works that you hoped to see are not on view at the time of your visit. During special exhibitions,