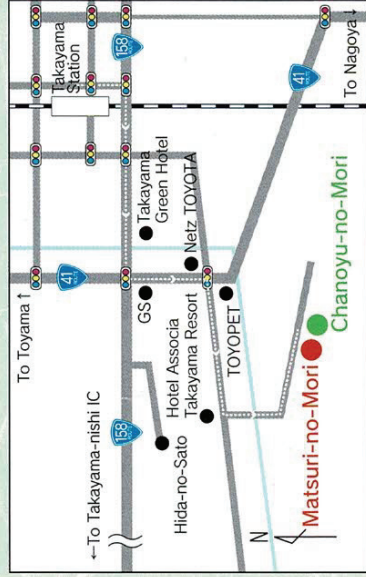


◆ Business hours

Chanoyu Museum	Tea House
9:00am ~ 5:00pm	10:00am ~ 4:30pm
(Entrance permitted until 4:00 pm)	
Closed	Wednesdays (Open if it is a national holiday)
Winter holidays (Please contact us for details)	
Parking	Free (5 motor coaches, 50 mid-size vehicles)

◆ Directions

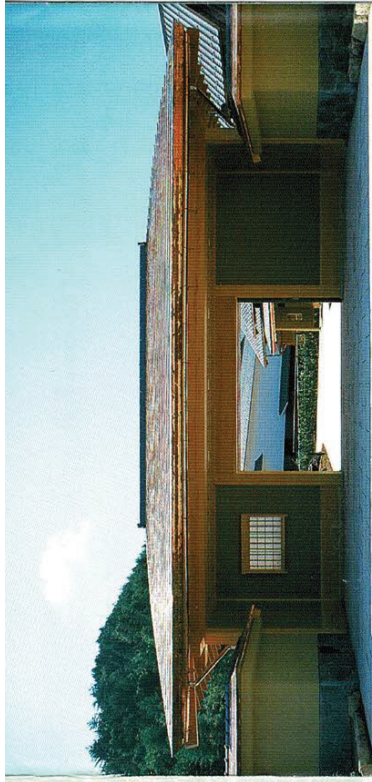


Hida Takayama Chanoyu-no-Mori

飛騨高山

茶の湯の森
ART FOREST

Chanoyu Museum
1070 Chishima-machi, Takayama-shi, Gifu Prefecture
506-0032
Tel.: (0577)37-1070 Fax: (0577)37-1071



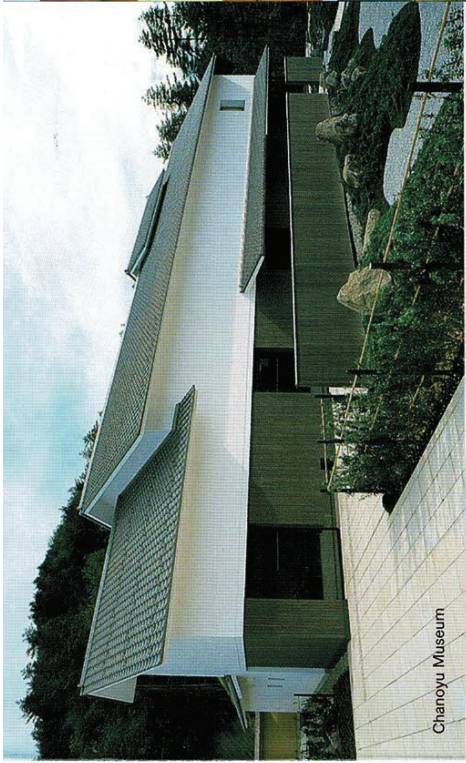
Experience the beauty of tea ceremony

Hida Takayama Chanoyu-no-Mori

飛騨高山

茶の湯の森
ART FOREST

Chanoyu Museum
Tea House Zuiun-an
Dokaku-an



Chanoyu Museum



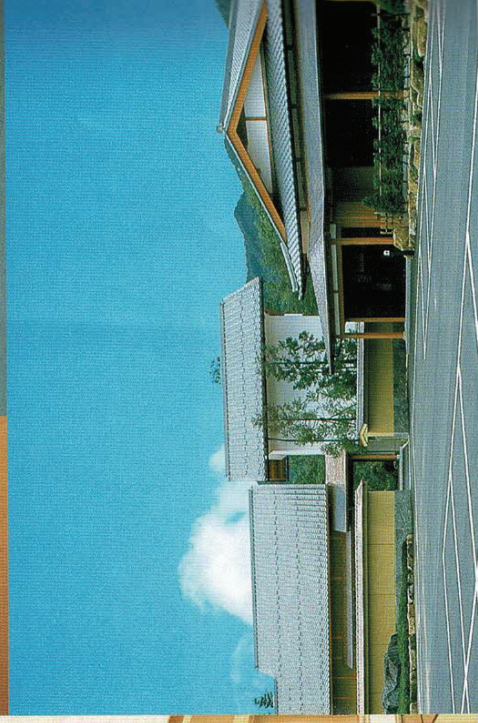
Tea House Zūnun-an



Dōkyū-kan



Shurei-kan



Tea House Zuiun-an



The tea ceremony house, with its elegant and ornate design, exhibits a refined, comfortable atmosphere. The arranged tea ware selected from the works of skilled artisans, some of whom are considered living national treasures, blend seamlessly with the interior.

Tea service, refreshments, and others

At the Zuiun-an tea house, visitors can enjoy tea using tea bowls created by renowned craftsmen, some of whom are considered living national treasures. Experience the world of tea ceremony in the tranquil, spacious hall or more casually in the *ritsurei* while seated on a chair.

*Please call in advance if you wish to enjoy refreshments or to privately reserve the tea house.



Hall (Large tea room)

Tea ceremony using chairs and tables

Dokaku-an



Dokaku-an is a traditional tea house with a creative, modern touch. The building is made entirely of Japanese yew, the prefectural tree of Gifu that has been prized since ancient times.

This tea house sets the perfect stage for enjoying the tea of Hida Takayama. Visitors can look forward to a memorable experience while immersing themselves in the unique atmosphere of the tea ceremony.

Various tea ware carefully selected according to season are usually on display.



Chanoyu Museum

Hida Takayama is known as the place of origin of the Sowa-ryu school of tea ceremony, which was founded by Kanamori Sowa, a famous tea ceremony master of the Edo period. Chanoyu (tea ceremony) is deeply rooted in the history of the city, where the tradition is commonly practiced by masters of the craft.

The Chanoyu Museum displays artwork created by craftsmen who are considered living national treasures, as well as other prominent artists who carry on the tradition. The museum also displays artwork created by successive masters of the Raku family, works of grand tea masters, historical calligraphy, folding screens, and lacquer craft made using the wings of tamamushi (jewel beetles). Here, visitors can encounter the world of traditional techniques and beauty.



Wajima-nuri Tamamushi Daisu arrangement

Tamamushi art pieces

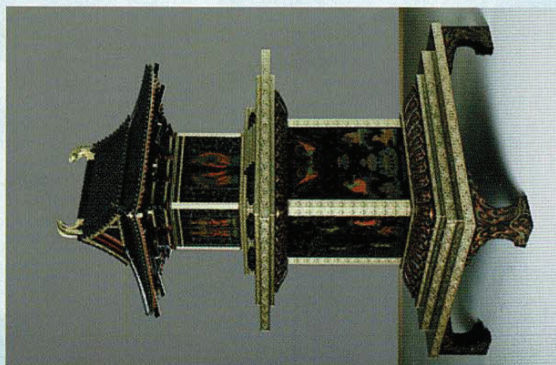
Japan's only tea ware and zushi (miniature shrine) made of jewel beetle wings have now been beautifully brought back to life by the masterful work of artisans.

Tamamushi-no-Zushi

The "Tamamushi-no-Zushi" a national treasure enshrined in Horyuji Temple, is said to have been created more than 1,200 years ago during the Asuka period as a nenjibutsu (a Buddhist image kept close for personal daily worship) for Empress Suiko to worship daily.

In order to recreate the beauty of this national treasure, which had been gradually losing its luster, a total of about 4,000 artisans were gathered for the restoration project which took about 4 years.

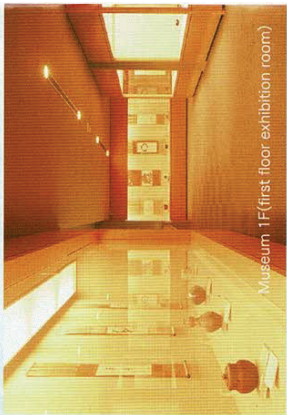
Two sets of Tamamushi-no-Zushi were created: a reproduced version and a modern Heisei version. The reproduced version has been offered to Horyuji Temple, and is displayed regularly at the hidden treasure exhibit held twice a year in spring and autumn. The modern Heisei version is always open to the public at the Chanoyu Museum.



Tamamushi-no-Zushi (modern Heisei version)



Sennonkyu-fude
Nijurokunitchi-zuke Shosoku



Museum 1F (first floor exhibition room)



Museum 2F (second floor exhibition room)



Arakawa Toyozo/Shino-chawan



The first of Raku family, Chojiro /Kuro-chawan Mei "Yamamba"



Kodakatori Chairie Mei "Kokonoe"

Main collection

Pottery and other artwork

Arakawa Toyozo
Miwa Kyuwa
Miwa Jusetsu
Shimizu Uichi
Imaizumi Imaemon
Suzuki Osamu
Inoue Manji
Kato Takuo
Fujiwara Yu
Tokuda Yasokichi

Sakaïda Kakiemon

Kato Kozo
Ohi Chozaemon
Kato Tokuro
Kitaoji Rosanjin
Fujita Kyohei
Others
Lacquer art, metal art, and others

Senke Jissoku

Eiraku Zengoro
Onishi Seiwemon
Okumura Kichibe
Kuroda Shogen
Komazawa Risai
Tsuchida Yuko
Nakagawa Joeki
Nakamura Sotetsu
Hiki Ikkan
Raku Kichizaemon

Most artwork on display was created by these artists.

Senke Jissoku / The 10 types of exclusive artisan families selected from all tea ware craftsmen, designated by the Senke Sado Oiemoto